



THE COMPREHENSIVE GUIDE TO SELECTING THE IDEAL IT PARTNER

How the Right MSP Can Transform Your
Business and Ensure Long-Term Success

Table of Contents:

Introduction

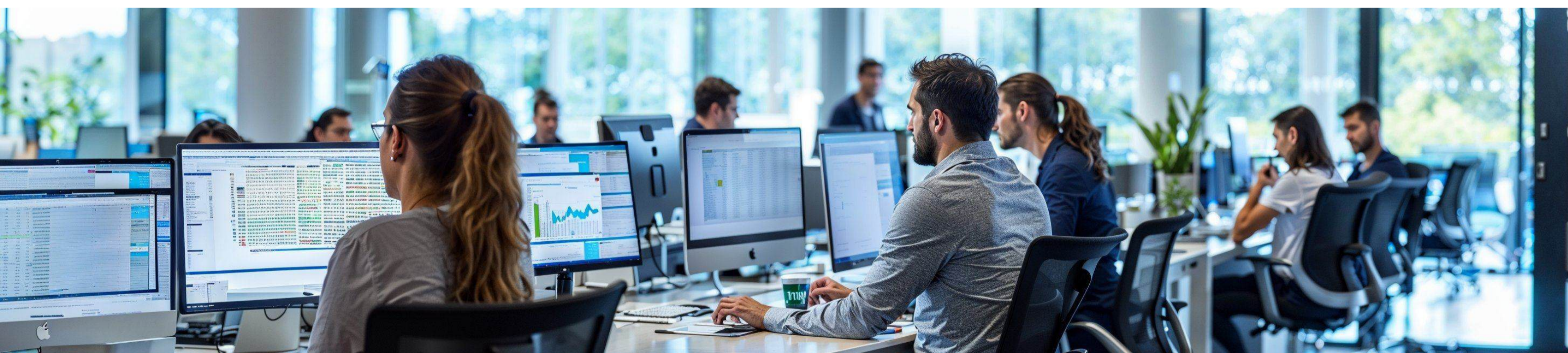
1. Diagnose Your IT Challenges
2. Evaluate Response Times
3. Review Client Retention & Satisfaction
4. Verify Uptime Commitments
5. Seek Strategic IT Guidance
6. Confirm Scalability
7. Prioritize Transparency & Communication
8. Assess Cultural Fit
9. Compare Findings & Schedule a Follow-Up
10. Formalize the Partnership

Choose Turn Key Solutions to Drive Your
Success and Growth

Introduction

Selecting an IT partner is one of the most critical decisions for any business. With only **30% of digital transformation projects achieving their goals**, it's clear that success hinges on choosing a managed service provider (MSP) that doesn't just offer services but actively aligns technology with your business priorities.

This eBook will show you how to identify the right MSP to not only address your challenges but also position your business for lasting growth and innovation.



Choose a Trusted MSP for Long-Term Growth

[Choose Turn Key](#)

1. Diagnose Your IT Challenges

Before selecting an MSP, you need to understand your IT environment and its current challenges clearly. This evaluation will guide your decision-making and help you identify a provider that can meet your specific needs.

Assess Your Business Pain Points

Start by addressing the following questions:

- **Downtime and Performance:** How frequently do IT failures disrupt your operations?
- **Cybersecurity Risks:** Are you equipped to handle phishing, malware, or ransomware attacks?
- **Internal Team Overload:** Is your in-house IT staff overwhelmed or lacking expertise?
- **Scalability Issues:** Are your current systems limiting growth or innovation?
- **Service Issues:** Is your current helpdesk team (outsourced or not) falling behind and not able to meet your employees' needs fast enough?

2. Evaluate Response Times

When selecting an MSP, start by assessing how quickly they respond to IT emergencies. Timely responses are essential to keeping your operations running smoothly. Review their Service Level Agreements (SLAs) to understand how soon they address critical issues and resolve problems.

3. Review Client Retention & Satisfaction

An MSP's ability to maintain long-term relationships shows how well they support their clients. Ask for references from businesses similar to yours. These insights will help you determine if the MSP consistently meets expectations, adapts to client needs, and addresses unique challenges effectively.

4. Verify Uptime Commitments

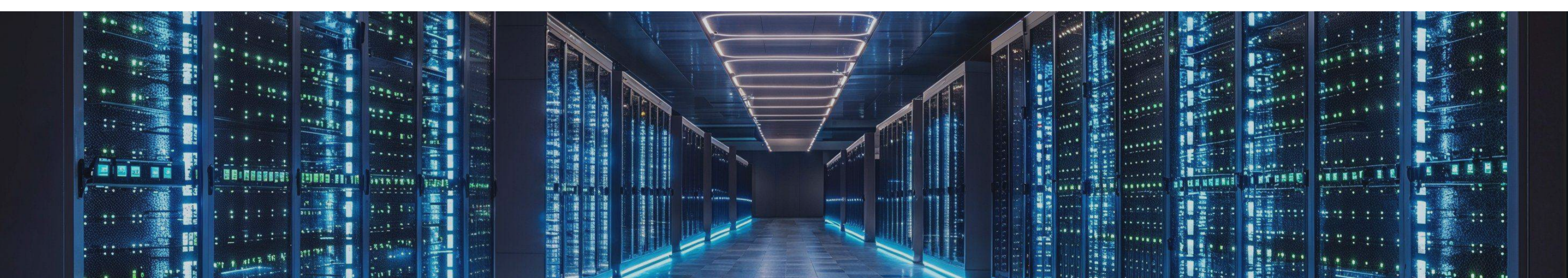
Operational reliability is critical for businesses that rely on IT systems for daily operations. A dependable MSP minimizes downtime risks and ensures that systems remain stable. Request reports or case studies that highlight their ability to keep businesses running smoothly during both normal operations and unexpected disruptions.

Learn More About Managed IT Services With These Resources

- [Managed IT Services Pricing Explained](#)
- [How Businesses Can Leverage AI While Staying Secure](#)
- [The Complete Guide to Cloud Security, Storage, and Backup](#)

5. Seek Strategic IT Guidance

A strong MSP should act as a strategic partner, not just a service provider. This includes helping you align IT strategies with business goals. For example, look for providers that offer Virtual Chief Information Officer (vCIO) services. A vCIO works with your leadership team to plan IT budgets, identify cost-saving opportunities, and align technology investments with your long-term vision.



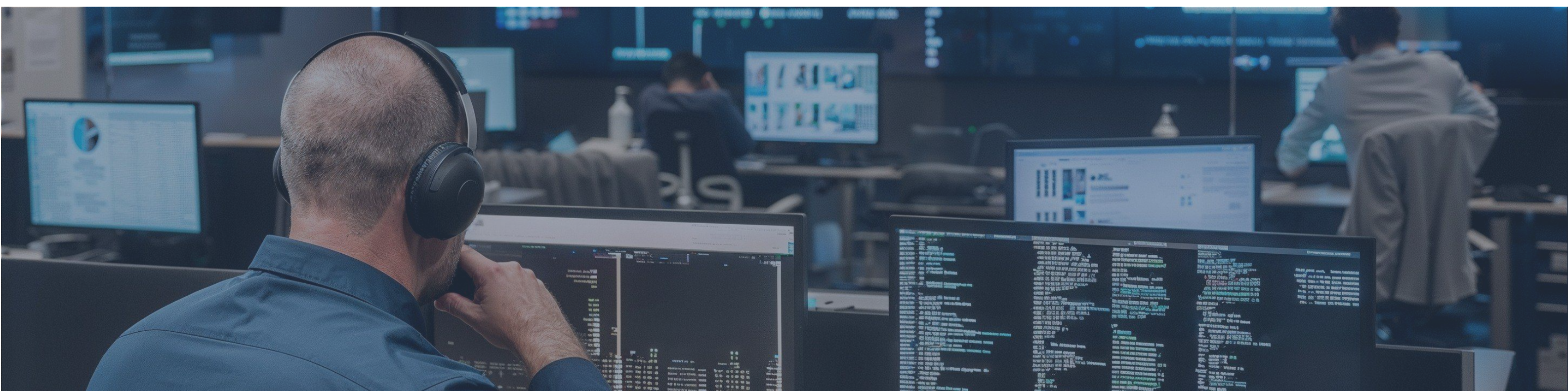
6. Confirm Scalability

Your IT needs will evolve as your business grows. The right MSP will have flexible service offerings to support your changing requirements without disruptions.

- Ask if their solutions can scale as your business expands.
- Confirm that they provide options to adjust resources during busy periods or growth phases.
- Check if they incorporate emerging technologies like automation or cloud solutions to keep your IT infrastructure future-ready.

Below is a snapshot of how scalable MSP solutions evolve with your business.

Growth Stage	Typical Needs	Scalable MSP Solutions
Startup (1-10 employees)	Basic IT setup, cybersecurity tools, cloud hosting	Cost-effective, entry-level packages
Growth (10-50 employees)	Robust network infrastructure, compliance	Enhanced cybersecurity, regulatory audits
Enterprise (50+ employees)	Advanced automation, multi-location support	Custom IT roadmaps, 24/7 on-call expertise



7. Prioritize Transparency & Communication

Clear communication builds trust and ensures accountability. The right MSP will keep you informed and offer regular updates on your IT performance.

- Request examples of performance reports. These should include actionable insights into how your systems are performing and where improvements are needed.
- Verify that the MSP offers multiple communication channels such as phone, email, or live chat.
- Ensure they schedule regular reviews to discuss progress and refine strategies based on your goals.

8. Assess Cultural Fit

Beyond technical capabilities, an MSP should align with your company culture to foster better collaboration.

- Look for a provider that understands your values and integrates seamlessly with your team.
- Evaluate how responsive and adaptable they are during the decision-making process.
- Ask about their approach to customer satisfaction and continuous improvement to ensure they prioritize your needs.

9. Compare Findings & Schedule a Follow-Up

Once you gather all the relevant information, compare each MSP against your IT goals. Focus on their ability to deliver services that align with your priorities.

- Schedule a follow-up meeting to address any remaining questions.
- Discuss implementation timelines, escalation procedures, and specific expectations for the partnership.

10. Formalize the Partnership

When you select an MSP, ensure that the contract clearly outlines deliverables, timelines, and responsibilities. A smooth onboarding process is key to transitioning without disruptions.

By following these steps, you will choose an MSP that not only meets your current IT needs but also supports your long-term success. The right partner will help you align technology with your business goals and drive innovation for the future.

Choose **Turn Key Solutions** to Drive Your Success and Growth

Choosing the right IT partner means addressing today's challenges while building a solid foundation for the future. Turn Key Solutions delivers expert strategies, proactive support, and a partnership rooted in trust.

We empower your business to thrive by reducing costs, accelerating growth, and aligning IT solutions with your goals. With Turn Key Solutions, you gain a reliable and scalable partner dedicated to your success.



Headquarters

4913 South Sherwood Forest Blvd
Baton Rouge, LA, United States



[225-251-9442](tel:225-251-9442)

[Reach Out Today!](#)



turnkeysol.com

[in](#) [▶](#) [X](#) [f](#)